



地址 Address :

香港新界沙田澤祥街9號香港中文大學醫院1樓
1/F, CUHK Medical Centre, 9 Chak Cheung Street, Shatin,
New Territories, Hong Kong

服務時間 Service Hours :

星期二及四: 09:00-17:00
Tuesday and Thursday: 9:00AM - 5:00PM

電話 Telephone : (852) 3946 6888

查詢 Enquiry : (852) 3946 6388

網址 Website :

<https://www.cuhkmc.hk/tc/special-clinics-and-other-services/hepatobiliary-and-pancreatic-disease-clinic>



 CUHK Medical Centre  @cuhkmedicalcentre

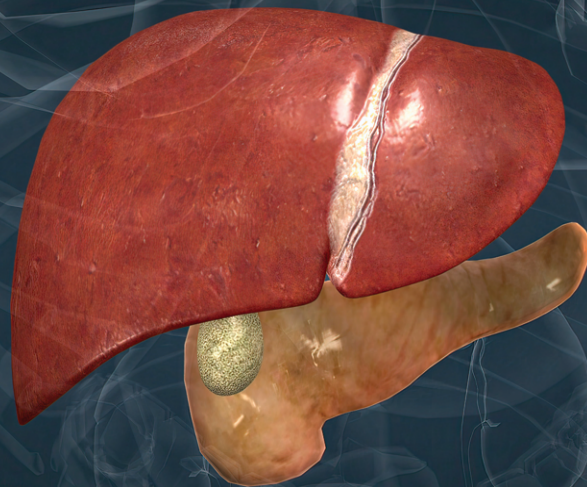
香港中文大學醫學中心有限公司「香港中文大學醫院」保留更改以上所有條款及細則的權利而毋須另行通知。如有任何爭議，香港中文大學醫學中心有限公司「香港中文大學醫院」保留最終決定權。本文一律以英文版本為準。

CUHK Medical Centre Limited retains the right to amend any of the above terms and conditions without prior notice. In case of dispute, CUHK Medical Centre Limited reserves the right of final decision. If any discrepancy arises between the English version and the Chinese version, the English version shall prevail.

CUHKMC/H/HPDC/INTRO/2024/04

香港中文大學醫院 肝膽胰門診

CUHK Medical Centre Hepatobiliary and Pancreatic Disease Clinic



香港中文大學醫院
CUHK
Medical Centre

肝膽和胰腺疾病包括一系列良性和惡性疾病。良性疾病包括膽結石病、膽管結石、復發性化膿性膽管炎、肝膿腫、膽管狹窄以及急/慢性胰腺炎。惡性疾病包括原發性肝癌（Hepatocellular carcinoma）、肝轉移（Liver metastasis）、膽管癌（Cholangiocarcinoma）、胰腺癌和惡性胰腺囊性病變。本診所為患有這些疾病的患者提供跨專科治療方案，跨專科團隊包括外科醫生、介入放射科醫生、臨床腫瘤學家和肝病學家。

The hepatobiliary and pancreatic diseases include a spectrum of benign and malignant conditions. The benign conditions are gallstone disease, bile duct stone, recurrent pyogenic cholangitis, liver abscess, bile duct stricture, and acute and chronic pancreatitis. The malignant conditions are primary liver cancer (hepatocellular carcinoma), liver metastasis, bile duct cancer (cholangiocarcinoma), pancreatic cancer (carcinoma of the pancreas) and malignant pancreatic cystic lesions. The clinic provides a multidisciplinary approach to patients with these diseases, involving the surgeon, interventional radiologist, clinical oncologist and hepatologist.

我們的服務 Our Services

臨床評估 Clinical Assessment



- 超聲波掃描
Ultrasonography (US)
- 電腦掃描造影
Computerised Tomography (CT) scan
- 磁力共振造影
Magnetic Resonance Imaging (MRI) scan
- 正電子電腦掃描
Positive Emission Tomography (PET) scan

手術 Surgery

- 腹腔鏡和開放性肝切除術
Laparoscopic and open hepatectomy
- 腹腔鏡和開放式射頻消融術
Laparoscopic and open radiofrequency ablation
- 腹腔鏡和開放微波消融術
Laparoscopic and open microwave coagulation
- 腹腔鏡膽囊切除術
Laparoscopic cholecystectomy
- 內窺鏡逆行胰膽管造影
Endoscopic Retrograde Cholangio Pancreatography (ERCP)
- 超聲內窺鏡檢查
Endoscopic Ultrasonography (EUS)
- 開放性膽管切除術
Open bile duct resection
- 腹腔鏡和開放性遠端胰腺切除術
Laparoscopic and open distal pancreatectomy
- 惠普爾手術（胰十二指腸切除術）
Whipple operation (Pancreaticoduodenectomy)

介入放射學治療 Interventional Radiology Treatment

- 經皮超聲引導下射頻消融術
Percutaneous ultrasound-guided radiofrequency ablation
- 經皮超聲引導下微波消融術
Percutaneous ultrasound-guided microwave coagulation
- 經皮經肝膽道引流
Percutaneous transhepatic biliary drainage (PTBD)
- 經皮經肝膽囊造口術
Percutaneous transhepatic cholecystostomy (PTC)
- 經動脈化療栓塞術
Transarterial chemoembolisation (TACE)

臨床腫瘤學治療 Clinical Oncology Treatment

- 強度調控放射治療
Intensity Modulated Radiotherapy (IMRT)
- 影像導向放射治療
Image Guided Radiotherapy (IGRT)
- 軀體立體定位放射治療
Stereotactic Body Radiotherapy (SBRT)
- 放射性核素內放射治療 - 鈷-90 (Y90) 治療
Radionuclide Therapy - Yttrium-90 (Y-90) Therapy
- 全身抗癌治療（靶向治療、免疫療法、化學治療）
Systemic Anticancer therapy (Targeted therapy, Immunotherapy, Chemotherapy)